

# Greenland Meadows | Greenland, NH



Greenland Meadows is a 357,000 square foot power center in Greenland, New Hampshire featuring Lowe's and Target. The site, located on Route 33, has excellent highway access from I-95 (Exit 3). It is located in the major Portsmouth, New Hampshire market and benefits from a strong seasonal tourism trade and from regional shoppers taking advantage of no State sales tax.

## LOCATION

- Located in the prime Portsmouth, New Hampshire market, noted for its many restaurants, attractions and shopping opportunities
- Draws Maine and Massachusetts shoppers given the lack of State sales tax in New Hampshire
- The population of the Portsmouth region swells in the summer with seasonal residents and visitors.
- Excellent highway access from I-95

## KEY TENANTS

Lowe's, Target

### GLA:

357,000 sf  
(56 acres)

### ADDRESS:

Greenland Road (Route 33)  
Greenland, New Hampshire  
03840  
Rockingham County

**NewEngland**  
DEVELOPMENT

**New England Development**  
One Wells Avenue  
Newton, Massachusetts 02459  
617-965-8700

# Greenland Meadows | Greenland, NH



## DEMOGRAPHICS

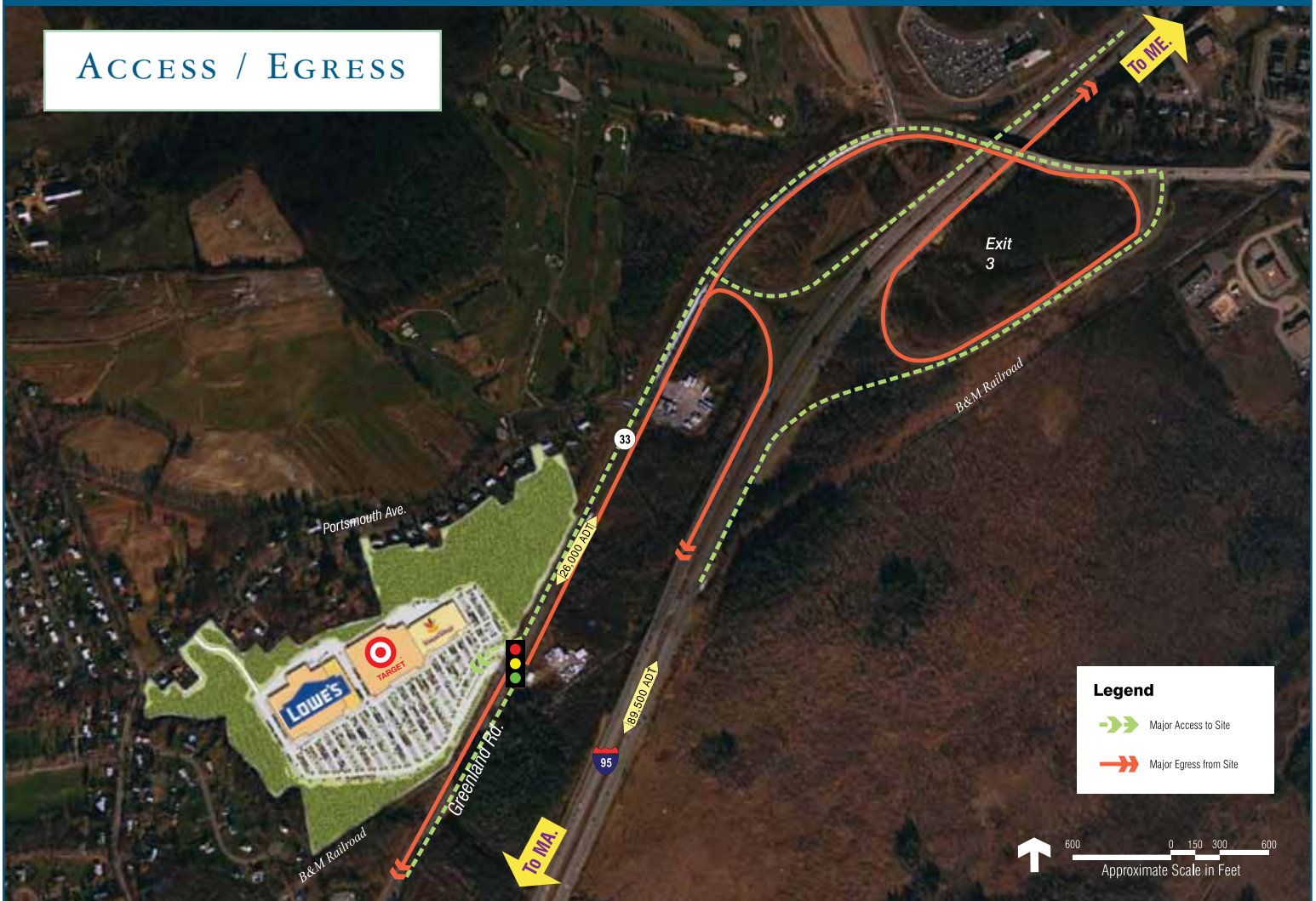
- Massachusetts and Maine residents shop in New Hampshire given its lack of State sales tax.
- The Portsmouth region is experiencing employment growth, especially with the redevelopment of the former Pease Air Force Base.
- The location, history, and cultural strength of Portsmouth regularly land it on “best places to live” lists.

TRADE AREA DEMOGRAPHICS	3 MILES	5 MILES	7 MILES
Population (2010)	14,971	40,415	71,075
Households (2010)	6,481	18,139	30,733
Average Household Income (2010)	\$84,685	\$93,206	\$94,958
Daytime Employment (2010)	25,418	45,267	56,348



# Greenland Meadows | Greenland, NH

## ACCESS / EGRESS



## ACCESS / EGRESS

- Located on Route 33 with a signalized entrance
- Excellent highway access from I-95 (Exit 3)



**New England Development**

One Wells Avenue, Newton, Massachusetts 02459 | 617-965-8700 | [www.neddevelopment.com](http://www.neddevelopment.com)