



Bedford Highlands is a 300,000 square foot open-air shopping center in Bedford, New Hampshire anchored by Lowe's and Target. Ideally located on Route 3 / South River Road just off I-293 / Frederick E. Everett Turnpike, Bedford Highlands serves the Greater Manchester region and is only three miles from Manchester – New Hampshire's most densely populated city.

## LOCATION

- Located on the highly traveled Route 3 / South River Road
- Easily accessible from I-293 / Frederick E. Everett Turnpike
- Situated in one of the most prosperous regions of New Hampshire

## KEY TENANTS

Lowe's, Target, IHOP

## GLA:

300,000 sf  
(30.5 acres)

## ADDRESS:

South River Road (Route 3)  
Bedford, New Hampshire  
03110  
Hillsborough County

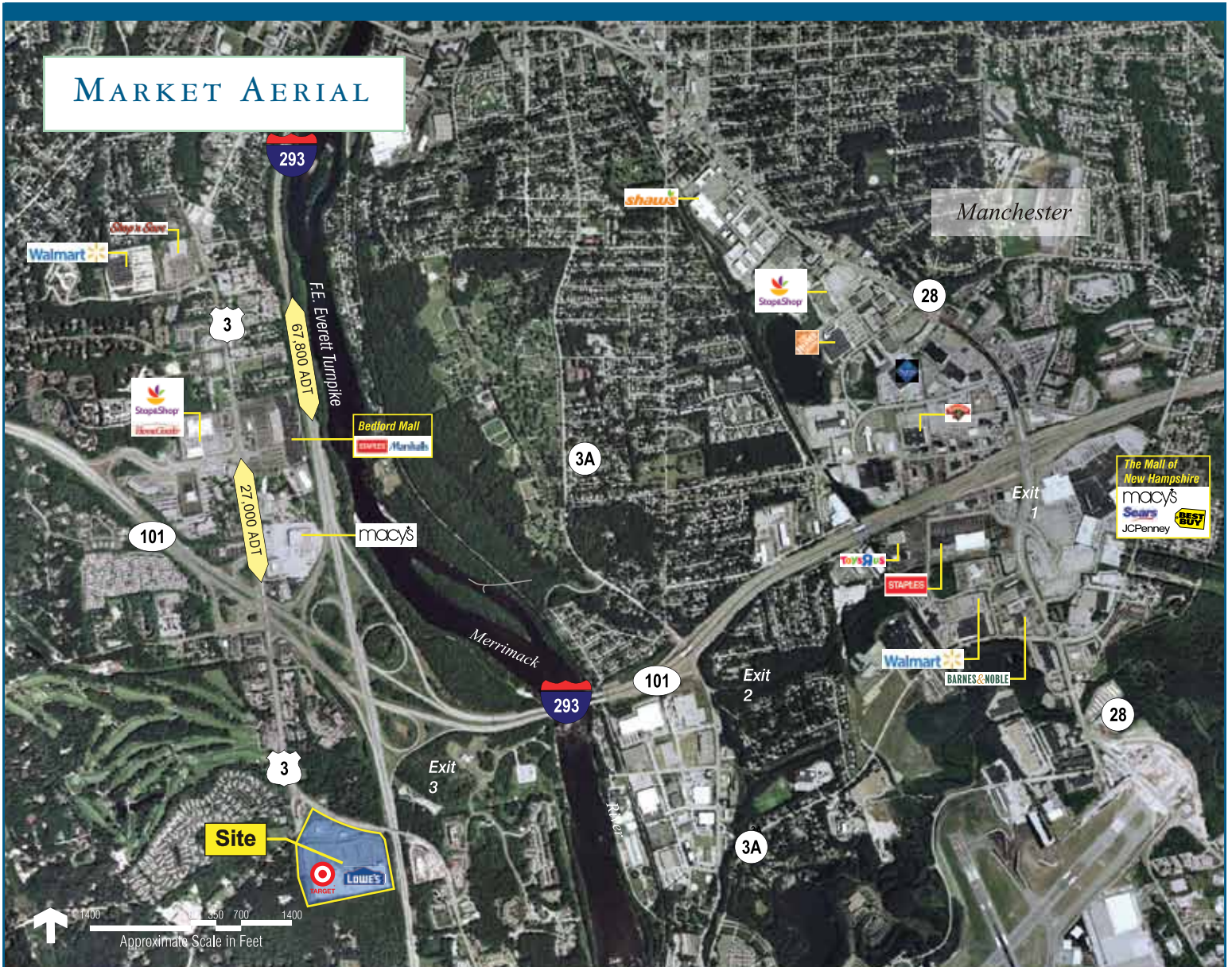
**NewEngland**  
DEVELOPMENT

## New England Development

One Wells Avenue  
Newton, Massachusetts 02459  
617-965-8700



# Bedford Highlands | Bedford, NH



## TRAFFIC VOLUMES

- Route 3 / South River Road: 23,000 ADT
- I-293 / Frederick E. Everett Highway: 46,275 ADT

# Bedford Highlands | Bedford, NH



**New England Development**

One Wells Avenue, Newton, Massachusetts 02459 | 617-965-8700 | [www.neddevelopment.com](http://www.neddevelopment.com)